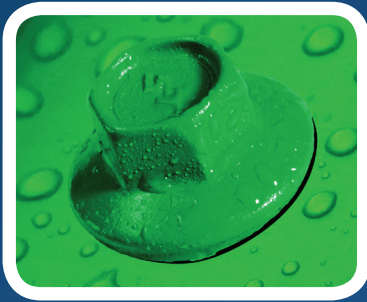


# MAXX™ SteelBinder®

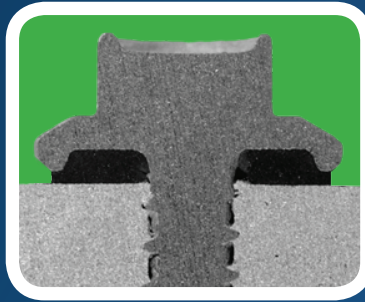
If It Doesn't Say ST, It's An Imitation

Metal to Metal Fastening System

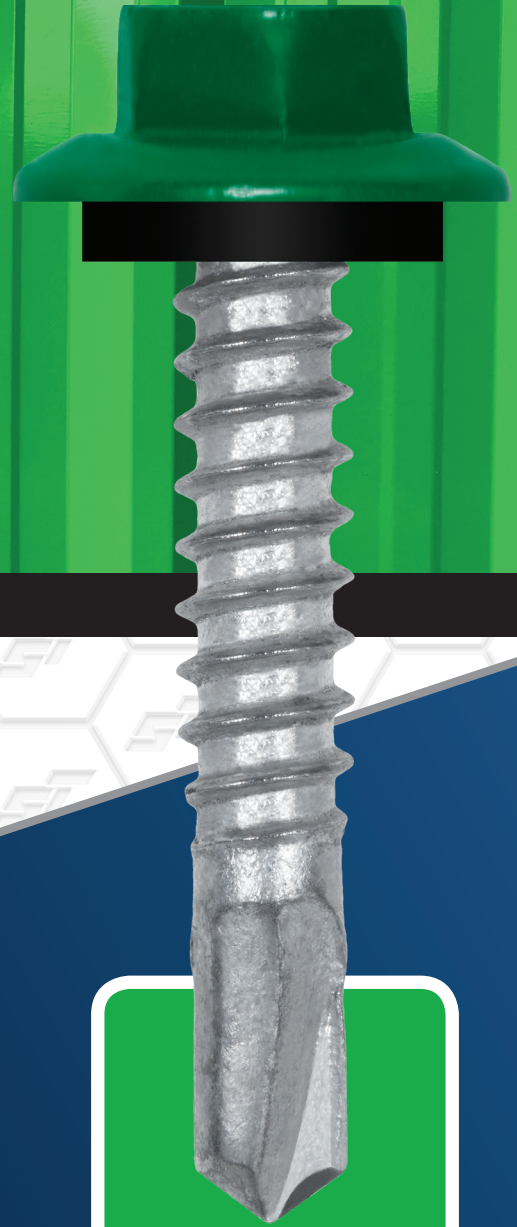
**Three Unique Technologies  
Create a Synergy of Unmatched  
Performance**



**POWERFUL™**  
CORROSION DEFENSE  
POWDER COAT SYSTEM



**MAXX®**  
SELF DRILL  
SEALS ANY ANGLE  
HWH CUPPED HEAD



**2+3 HYBRID™**  
NO POINT WALKING  
SELF DRILL POINT

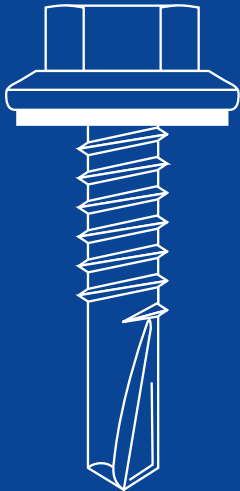
**ST®**  
**Fastening  
Systems**

A Division of The Hillman Group

**Built Strong Through Innovation**



# MAXX™ SteelBinder®



## POWDERFUL™ CORROSION DEFENSE POWDER COAT SYSTEM

### Coating Features

- 2.5 mil of computer controlled powder coat is applied over zinc plating and chromate sealer.
- Unique polyester powder formulation resists harmful UV rays and chemical breakdown.
- Automated process ensures a consistent color match from batch to batch.
- POWDERFUL is completely free of volatile organic compounds (VOC), and is entirely recyclable.
- There are 35 standard colors that match high volume metal panel paint colors.

### Benefits

#### Durability

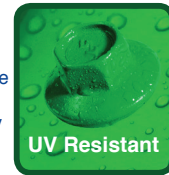
Powder coating outperforms wet paint in corrosion resistance due to its tough shell barrier coating. It also provides better protection from heat, impact, abrasion, harmful ultra violet rays, and extreme weather conditions. Wet paint will chalk and fade over time. POWDERFUL will maintain its original color properties for many more years than wet paint.

#### Sustainability

POWDERFUL is environmentally friendly. The wet paint process releases certain harmful VOC's—volatile organic compounds—into the air, but the powder process involves no VOC's. It leaves no environmental footprint, and all material is recyclable and re-usable in future production.

#### ST Advantage

A building owner's investment is secure knowing the "system" of fastener powder coating and metal panel is superior to a wet paint process.



UV Resistant

**Powderful™**  
Powder Coat Process



Fading

**Competitors**  
Wet Paint Process



## MAXX® SELF DRILL SEALS ANY ANGLE HWH CUPPED HEAD

### Head Features

- 5/16 Cupped HWH with Encapsulated UV Resistant EPDM Washer
- Good Atmospheric and Chemical Corrosion Resistance Outstanding coating adhesion, vibration attenuation, damping capacity and ductility
- Superb aesthetic appearance - Positive Seal at Any Angle
- No Distortion Maximum Pull Over Strength - Cupped head design protects the washer from UV damage.

### Benefits

#### Durability

MAXX Head combines an exceptionally fade resistant Powderful coating with a UV Resistant EPDM washer encapsulated cupped head resulting in a superior long lasting weather tight sealing system.

#### ST Advantage

Provides maximum pull over strength and positive seal at any angle while protecting the EPDM washer from direct UV sun rays.



**MAXX®**  
Seals at Any Angle  
Protects EPDM Washer From UV Sun Rays

#### Size

12-14 x 3/4", 1",  
1-1/4", 1-1/2", 2",  
2-1/2", 3",  
1/4" x 7/8" Stitch

## 2+3 HYBRID™ NO POINT WALKING SELF DRILL POINT

### Point Features

- No Point Walking--Effortless quick penetration--Easy Multi-Layer Penetration--Drilling capacity to .210"
- Advanced forging process technology - Sharp drill edges consistently cut the metal, eliminating slow or dropped screws and pigtailed that can embed themselves in the rubber washer.

### Benefits

#### Performance

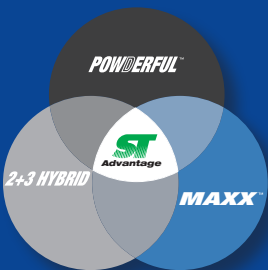
Combination 2 and 3 point design allows for an effortless, no point walking, quick penetration even into multi-layer applications. Reduces pigtailed. Sharp cutting edges of harden drill point reduces installation time. Point to thread maximize pull out strength and minimize back out

#### ST Advantage

Quick installation in both single and multi-layer applications. Drills with less effort.



**Easy Multi-Layer Penetration**



Three Unique Technologies  
Create a Synergy of Unmatched Performance



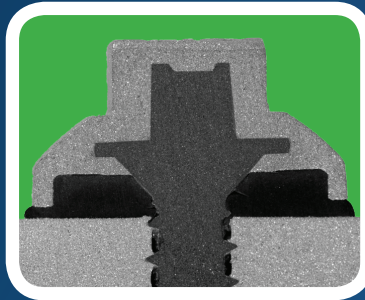
# ZXL™ SteelBinder®

If It Doesn't Say ZXL, It's An Imitation

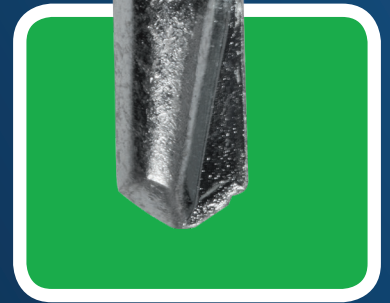


Metal to Metal Fastening System • Long Life

*Three Unique Technologies  
Create a Synergy of Unmatched  
Performance*



**ZXL™**  
**NO RED RUST**  
ZAMAG DIE CAST HEAD



**2+3 HYBRID™**  
**NO POINT WALKING**  
**SELF DRILL POINT**

**POWERFUL™**  
**CORROSION DEFENSE**  
POWDER COAT SYSTEM

**ST**  
**Fastening  
Systems**

A Division of The Hillman Group

**Built Strong Through Innovation**



# ZXL™ SteelBinder®



## POWDERFUL™ CORROSION DEFENSE POWDER COAT SYSTEM

### Coating Features

- 2.5 mil of computer controlled powder coat is applied over zinc plating and chromate sealer.
- Unique polyester powder formulation resists harmful UV rays and chemical breakdown.
- Automated process ensures a consistent color match from batch to batch.
- POWDERFUL is completely free of volatile organic compounds (VOC), and is entirely recyclable.
- There are 35 standard colors that match high volume metal panel paint colors.

### Benefits

#### Durability

Powder coating outperforms wet paint in corrosion resistance due to its tough shell barrier coating. It also provides better protection from heat, impact, abrasion, harmful ultra violet rays, and extreme weather conditions. Wet paint will chalk and fade over time. POWDERFUL will maintain its original color properties for many more years than wet paint.

#### Sustainability

POWDERFUL is environmentally friendly. The wet paint process releases certain harmful VOC's—volatile organic compounds—into the air, but the powder process involves no VOC's. It leaves no environmental footprint, and all material is recyclable and re-usable in future production.

#### ST Advantage

A building owner's investment is secure knowing the "system" of fastener powder coating and metal panel is superior to a wet paint process.



UV Resistant

**Powderful™**  
Powder Coat Process



Fading

**Competitors**  
Wet Paint Process

## ZXL™ NO RED RUST ZAMAC DIE CAST HEAD

### Head Features

- 5/16" Cupped HWH is manufactured from a strong ZAMAC zinc-aluminum alloy. The head is molded. It is not a cap. The molded head encapsulates the EPDM washer, which fits neatly & conforms to the inside of the mold.
- Head & washer face carry a 40 year warranty against red rust.
- The ZXL is proudly molded in the USA.

#### Size

- 12-14 x 3/4", 1", 1-1/4", 1-1/2", 2", 2-1/2", 3", 1/4" x 7/8" Stitch

### Benefits

#### Durability

Zinc-Aluminum alloy is impervious to red rust. The warranty on the ZXL matches that of the metal panel, completing the roof "System".

Head design is not only aesthetic, but functional. Even when driven at an angle, it captures the EPDM rubber washer.

Head design locks the panel in place. Pullover strength is greater than a traditional bonded sealing washer

POWDERFUL paint provides an additional barrier coat of corrosion resistance.

#### ST Advantage

The building investment retains its value when installed with ZXL Steelbinder fasteners longer than traditional carbon steelbinder fasteners, which will not last the life of the metal panel.



ZXL™

**No Red Rust Zinc Die Cast Molded Head**



Red Rust

**Competitors**  
Wet Paint Process over Carbon Head

## 2+3 HYBRID™ NO POINT WALKING SELF DRILL POINT

### Point Features

- No Point Walking--Effortless quick penetration--Easy Multi-Layer Penetration--Drilling capacity to .210"
- Advanced forging process technology - Sharp drill edges consistently cut the metal, eliminating slow or dropped screws and pigtailed that can embed themselves in the rubber washer.

### Benefits

#### Performance

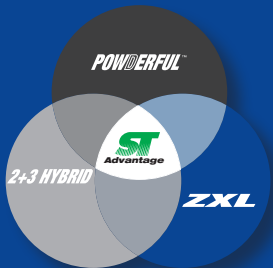
Combination 2 and 3 point design allows for an effortless, no point walking, quick penetration even into multi-layer applications. Reduces pigtailed. Sharp cutting edges of harden drill point reduces installation time. Point to thread maximize pull out strength and minimize back out

#### ST Advantage

Quick installation in both single and multi-layer applications. Drills with less effort.



Easy Multi-Layer Penetration



Three Unique Technologies

Create a Synergy of Unmatched Performance